



Telekom **MMS**

Employee Experience Solutions.

Quiz Plugin.

Release Notes Version 3.5



Plugin Quiz.

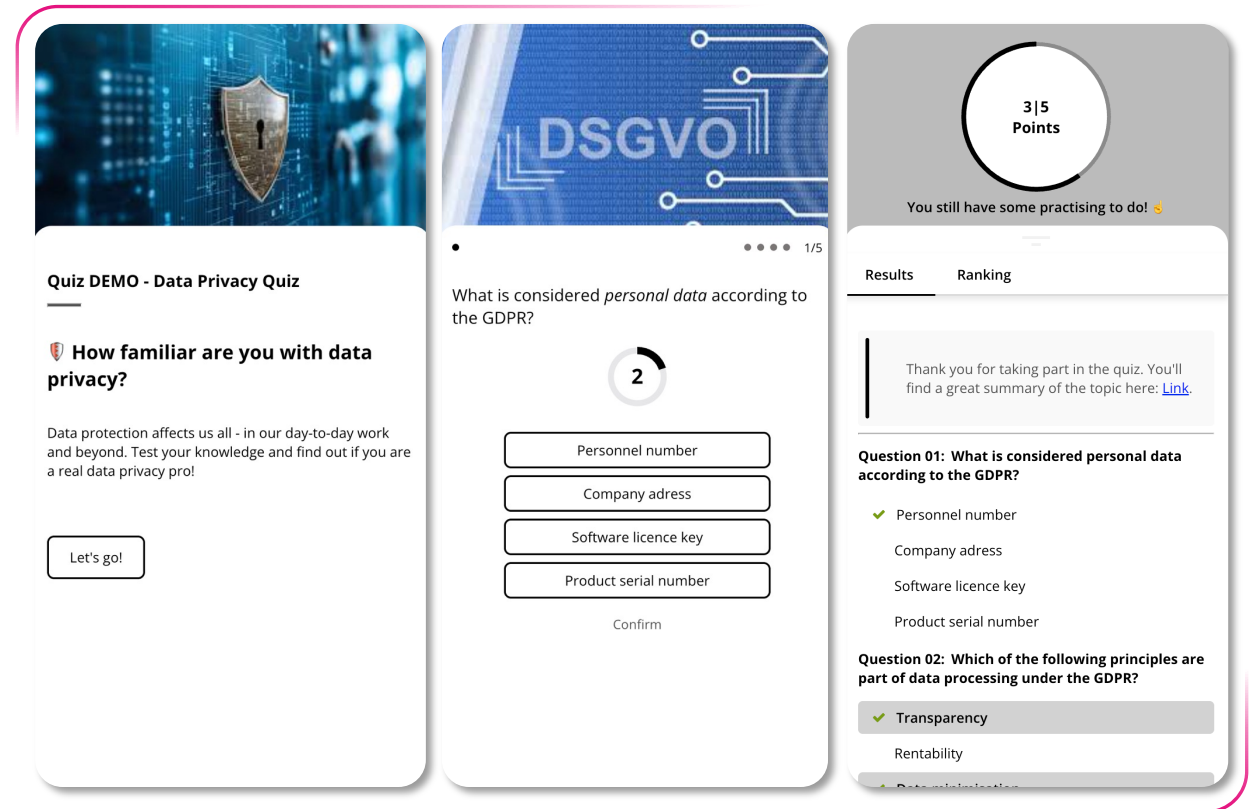
🔍 Use Cases

Transform your intranet or employee app into an engagement hub with our powerful quiz plugin! Designed to motivate employees and spark participation, this tool is perfect for competitions, e-learning, and more

Whether you're boosting engagement or delivering training, our quiz plugin makes it easy, fun, and effective.

📺 Features

- **Unlimited Questions & Customizable Feedback:** Tailor quizzes to your needs and provide instant, personalized feedback for better engagement.
- **Participant Ranking (Optional):** Motivate employees with friendly competition through end-of-quiz rankings.
- **Time Limit for Questions (Optional):** Add excitement by setting a time limit for answers, encouraging quick thinking and participation.
- **Anonymous & One-Time Participation:** Encourage honest feedback and inclusivity with flexible participation options.
- **CSV-Export for Results:** Analyze quiz data easily with exportable results for actionable insights.
- **Random Mode & Templates:** Keep quizzes dynamic with random question selection and save time with ready-made templates.
- **Scheduled Activation:** Plan quizzes with start/end dates to align with campaigns, training, or events.



Release Notes – Quiz 3.5 - Overview.

NEW FEATURES



- Advanced export

IMPROVEMENTS



- Update the export for anonymous mode



01

New Features.

Advanced export.

With this version, we are introducing an important new feature:

👉 **It is now possible to expand the export of quiz results to include information from individual users' profile fields!**

What's new?

In the export area of the plugin, editors can now select individual additional profile fields to be included in an extended export. There is also now always the option to generate an export in anonymous mode, i.e. without generating any personal data.

This allows for more detailed, personalised insights across departments, roles and other employee attributes – and all without changing the existing export process if the function is not used.

Why is this relevant?

This extension:

- ✓ Enables a deeper analysis of quiz results by user attribute
- ✓ Provides department- or role-specific insights
- ✓ Integrates seamlessly into existing export processes without complicating the user interface

The screenshot shows the 'Data/Export' tab in the plugin's settings. At the top, there are navigation tabs: Settings, Start Page, Questions, Feedback page, Results page, and Data/Export (which is active). Below these are three buttons: 'Export as CSV' (pink), 'Anonymous export as CSV' (pink), and 'Delete all datasets' (red outline). To the right of these buttons are language selection buttons: 'English', 'German', and 'French (France)'. A grey box contains the text: 'The quiz is currently in normal export mode. You can include sensitive participant information (e.g. names) in the export file, or export the data anonymously to hide participant identities.' Below this, it shows 'Amount of participations: 1' and 'Amount of completed participations: 1'. On the right side, there is a user profile summary for 'John Doe' with a pink circle containing '01', a crown icon, a grey circle with 'JD', and '0 Points' with a refresh icon. The main section has a checkbox for 'Live-Updates' (unselected) and a checked checkbox for 'Advanced export'. Below 'Advanced export' is the instruction 'Select the profile fields to be included in the export.' followed by a list of checkboxes: 'Select all', 'id johnDoe', 'type user', 'name John Doe', 'avatar', 'groups admins', 'phone +1-335-486-1336', 'email john-doe@nowhere.never', 'custom:location Berlin', 'custom:department Engineering', and 'custom:cost_center 12345'.

Advanced export.

Special case: Anonymous participation

- Editors can also select which profile fields to include in the export.
- Before participating, users consent to their selected profile fields being saved and used in the export.

This approach guarantees data protection and transparency while providing meaningful evaluations.

The screenshot displays the 'Anonymous submission' interface. At the top, there's a header bar with a back arrow, the text 'Zurück', a test identifier '#test 3.5', and a settings gear icon. Below this, a 'Consent Required' section contains a message: 'By participating you agree to the collection and processing of your responses for research purposes. If you do not consent, please do not proceed.' Two input fields are present: 'Custom.Department' and 'Custom.Location'. At the bottom of this section are 'Zurück' and 'Accept' buttons.

The main content area is titled 'Anonymous submission' with a red checkmark icon. It features a 'Consent message' section with a rich text editor. The editor's toolbar includes undo, redo, bold, italic, underline, strikethrough, paragraph style, list, link, and unlink. The message content reads: 'Consent Required' followed by the same consent text as in the top section.

Below the message, a section titled 'Select the profile fields to be included in the export.' contains a list of checkboxes with labels: 'Select all', 'id johnDoe', 'type user', 'name John Doe', 'avatar', 'groups admins', 'phone +1-335-486-1336', 'email john-doe@nowhere.never', 'custom:location Berlin', and 'custom:department Engineering'.



02

Improvements.

An update to the export for anonymous mode.

Problem

Exports in anonymous mode were hardly usable for analysis.

- One line per question
 - Response values of all participants in one cell, separated by commas
- No clean analysis per user or participation possible.

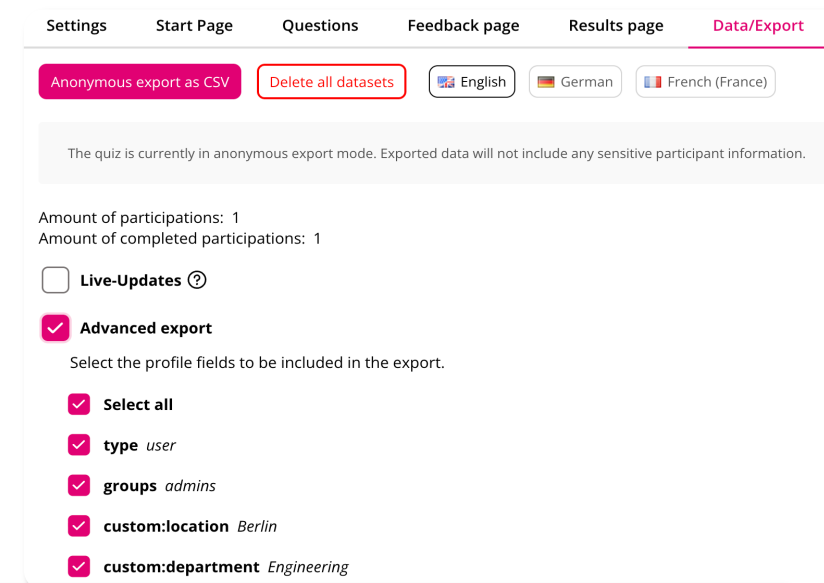
Solution

We are introducing a **new export structure** that is based on the non-anonymous mode, but which continues to **be free of personal data**.

- **One line per session** instead of per question.
- Clear, exportable data structure
- Data protection remains fully intact

Added Value

- ✓ More understandable exports
- ✓ Better processing (e.g. in Excel/BI tools)
- ✓ Supports future improvements in reporting



	A	B	C	D	E	F	G	H	
1	Anonymous s	custom.local	custom.depa	type	groups	Date	1) Test1	1) Score	1) Du
2	1f97a2c3-9b	Berlin	Engineering	user	normalUsers	01.06.26	2	0	
3	869a5fe8-c7	Berlin	Engineering	user	admins	01.06.26	1	1	

Questions?

Our team will be happy to help you!



ees-support@telekom.de



Further interesting information and contact details can be found here: <https://employee-experience-store.com/en>